



JFK Fashion Ltd.



ACCORD
on Fire and Building Safety in Bangladesh





About us...



JFK Fashion Ltd, a brand new subsidiary of Rashid Group, is a LEED GOLD sweater manufacturing company located at the heart of Dhaka City in Uttara, Utarkhan, 11.4 km from Hazrat Shah Jalal Int'l Airport.

The facility is a member of ACCORD (ID # 12673) and other relevant compliant bodies. The 110,000 sft factory is equipped with 500 sets of Shima Seiki, Gousheng & Hongqima brand automatic jacquard knitting machines and other branded machineries for linking to final finished products.

And to empower those machineries the factory also has an adequate number of expert, experienced & skilled manpower. Thus the technology combined with expertise results the factory to deliver approx. 400,000 pcs of finished sweaters per month to our valued customers.

MESSAGES FROM MANAGEMENT

CHAIRMAN

To materialize our dream, we have started 100% Export oriented "GREEN" sweater manufacturing factory, J.F.K Fashion Ltd. in the year 2014. We are running production with our respectful partner and increasing volume day by day

Mottalib Hossain (Ratan)

MANAGING DIRECTOR

I am expressing my sincere gratitude to my team of employees, patron and valued customers who constantly encourages and accompanies with us to make this journey possible and hope we would be able to be more competitive by adding more values for customers that lead this venture to have a better future.

M. Kafil Uddin Ahmed

DIRECTOR

In the context of globalizing form open market, business becomes highly competitive, and if the quality is not within the standard form under the correct time-frame then, business stands still at one particular point where success never meets. But I am confident that J.F.K FASHION LTD is doing excellent with its production standard, quality control, and timely completion of the assignments even under all effective active natural and artificial constraints.

Hazi Shafiul Alam (Shafil)

WHY WE ARE GREEN



Sustainable sites:

The factory is located conveniently close to all the essential facilities, where market, school, mosque, and bus stops are within 500 meters. The site also provides secure bicycle parking facilities and encourages the use of non-fossil fuel transport.

Water Efficiency:

Fresh, drinkable water is a precious commodity that is only available in a limited supply. Therefore, prudent use and treatment of waste water are very important as we look to expand our built environment and shrink natural treatment areas by reducing indoor & outdoor water use. 25% water saving fixtures & fittings are used all over the premises along with proper flow meters to maintain uses and consumptions.



Energy & Atmosphere:

The factory building has been designed in a way which saves energy and renewable power sources are also added to the project. 25KW solar power is infused on-grid with the main power source. The project is using NON-CFC (Chlorofluorocarbon) Evaporative Cooling Systems complying the perspective measures of ASHRAE Standard 90.1-2010. Hence resulting to optimized energy performance and enhanced refrigerant management to avoid global warming.



Indoor environmental quality:

The quality of the air on the inside of a building is important to all the occupants, as it can contribute to illness and lack of productivity. The factory design allows an increased amount of fresh air by using building materials and products without harmful chemicals to improve the air quality. It has a wide access to the outside views for providing day light and natural lighting and ample of space for better thermal comfort.



Innovation & Design:

The innovative & exceptional designing of all environmental aspects the factory has been done by a professional LEED accredited personnel with the special ability for green buildings.

Materials & Resource:

What materials are used, where they come from, how they are made, and how they are disposed of are instrumental in determining how green a project is. The factory uses more green materials, including renewable materials, recycled materials, and natural materials.





CURRENT MACHINERIES

Machine Detail	Number of Machine
Winding machine	60 sets
Auto Knitting machine	616 sets
Linking machine	650 sets
Washing /Hydro machine	76 sets
Dryer machine	8 sets
Bioler	2 sets
Steam iron	80sets
Sewing machine	76 sets
Bartack machine	16sets
Over lock machine	60sets
Button Stitch machine	16 sets
Button hole machine	16sets
Loop machine	4 sets
Dust cleaner	2 sets
Auto placket machine	16 sets
Auto neck machine	16 sets

EMPLOYEE

DEPARTMENT	NO: PAX
PRODUCTION & PLANNING	3
MARKETING	4
BUSINESS DEVOLOPMENT	2
MERCHANDISING	16
SAMPLE & PROGRAMING	4
ADMINISTRAITON & HUMAN RESOURCE	4
COMPLIANCE	4
PRODUCTION STAFF	60
QUALITY ASSURANCE	45
OPERATORS (JACQUARD)	300
OPERATORS (OTHERS)	1200
HELPERS & OTHERS	415
DOCTOR & NURSE	4
MAINTAINENCE	20
HOUSE KEEPING	50
SECURITY & OFFICE ASSISTANCE	50

PRODUCTION CAPACITY

Gouge wt	Brand	M/C qty	Per Month Capacity
12, 14	Shima Seiki	132	1,10,000-1,20,000 pcs
12, 14	Guosheng	100	40,000-50,000 pcs
12	Hongqina	150	50,000-60,000 pcs
3, 5, 7	Shima Seiki	118	1,20,000-1,30,000 pcs
3, 5, 7	Guosheng	100	60,000-80,000 pcs

Total Production

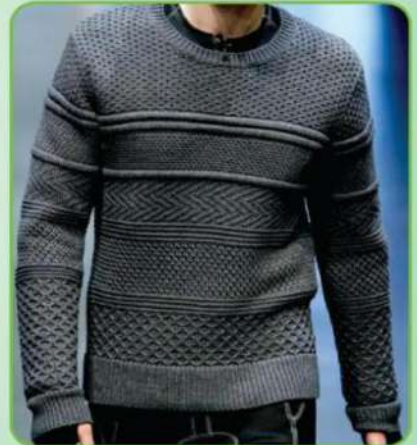
Capacity # 4.8 million pcs per annum.



DISPLAY ROOM



PRODUCT IMAGES



PRODUCT IMAGES





PRODUCTION AT A GLANCE



Program & Design



Sample



Knitting



Linking



Trimming & Mending



Washing

PRODUCTION AT A GLANCE



Sewing



Iron



P-QC



F-QC



Packing



Dining



CONTACT DATAILS:

* **M KAFIL UDDIN AHMED**
Managing Director
Email: kafil.uddin@rashidgroupbd.net

* **AMIR HAMZA ABIR**
Executive Director
Email: abir@jfkfashionbd.com
Cell: +8801876-006302

* **TANVIR AHMED**
General Manager (Group)
Email: tanvir@jfkfashionbd.com
Cell: +8801871-020270



SISTER CONCERN OF RASHID GROUP

- ▶ J.F.K. Fashion Ltd.
- ▶ Rashid Auto Bricks Ltd.
- ▶ Rashid Builders Ltd.
- ▶ Rashid Car Valley Ltd.
- ▶ Rashid & Co. Ltd.
- ▶ A Rashid CNG Filling Station Ltd.
- ▶ Confident CNG & Filling Station Ltd.
- ▶ R.K Paper Board Mills Ltd.
- ▶ SAAF Agro Industries Ltd.
- ▶ M/S Marble Plaza.
- ▶ M/S Ratan Enterprise.

BANK DETAILS

Bank Name: Rupali Bank
Branch: 18-Local Office 34,
Dilkhusha C/A, Dhaka-1000
Acc No: 0018020009240
Acc Type: CD-Curent Bank Deposit
Status: Active



Head office : House no # 30, Road No # 6/C, Sector no # 12, Uttara, Dhaka-1230, www.rashidgroupbd.net
Factory address : Mausaid, Uttarkhan, Dhaka-1229, www.jfkfashionbd.Com